

TRULINE®

The Innovative Hybrid Sheet Piling System®

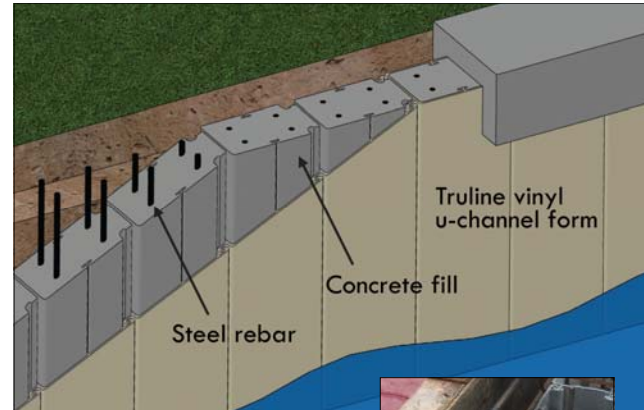
THE ULTIMATE SEAWALLS, BULKHEADS & LAKE WALLS

The innovative TRULINE wall system combines the best properties of traditional retaining wall materials — steel-reinforced concrete with protective vinyl — to build the ultimate wall for long-term performance. When properly designed and installed, a TRULINE wall will last 75+ years. Protect your property with the best and have peace-of-mind!

- Install as a new wall or in front of an older, failing wall.
- Engineers and/or contractors can design for each unique job site with varying soil conditions and strength requirements
- System can be installed in various soil conditions, including rock and coquina, making it easier for contractors to adapt to the jobsite without expensive change orders and to properly install a wall that will not toe-out
- Modular system makes it easy to create corners and follow the curves and contours of each property
- Durable co-extruded vinyl is formulated for high impact resistance and exterior weatherability, including the harsh sun and salt
- Over 92% post-industrial recycled material
- Virtually maintenance free and eliminates marine borer damage; non-corrosive, non-chalking, chemical-resistant and UV-resistant against fading and discoloration
- Lightweight material is easy to handle resulting in less job tear-up and can be installed from land or water
- Smooth, flat surface available in light gray, sand or beige

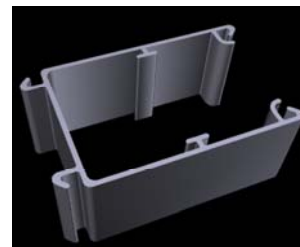
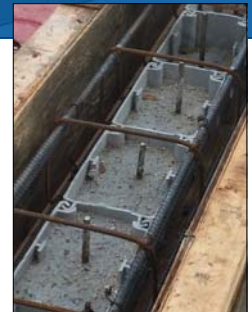
See reverse side for project photos

PROVEN STRENGTH ■ **LONG SERVICE LIFE**
EFFICIENT INSTALLATION ■ **REFINED AESTHETICS**

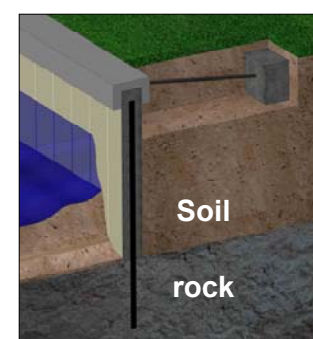


NEXT GENERATION SEAWALL TECHNOLOGY

POUR-IN-PLACE STEEL-REINFORCED CONCRETE WALL WITH VINYL PROTECTION



U-channel Part 12" wide x 8" deep x custom length



Install with anchors, pin-pile (rocky conditions), or cantilevered.

(239) 591-6234 ■ **sales@truline.us**

©2008-19 Truline LLC. Truline is a registered trademark of Truline LLC. US Patent No. 7628570, 8033759. Other patents pending. All rights reserved.

TRULINE®

The Innovative Hybrid Sheet Piling System®

THE NEW GENERATION OF SEAWALLS, BULKHEADS & LAKE WALLS



**SAVE COSTS IN THE LONG-RUN
BUILD YOUR WALL RIGHT THE FIRST TIME!**



**PROTECT YOUR PROPERTY
& HAVE PEACE-OF-MIND**

**After direct-hits from hurricanes, these property owners
were glad they had already installed a TRULINE wall!**



Matching TRULINE dock piles



(239) 591-6234 ■ **sales@truline.us**

©2008-19 Truline LLC. Truline is a registered trademark of Truline LLC. US Patent No. 7628570, 8033759. Other patents pending. All rights reserved.